

ERGOPLUS 25

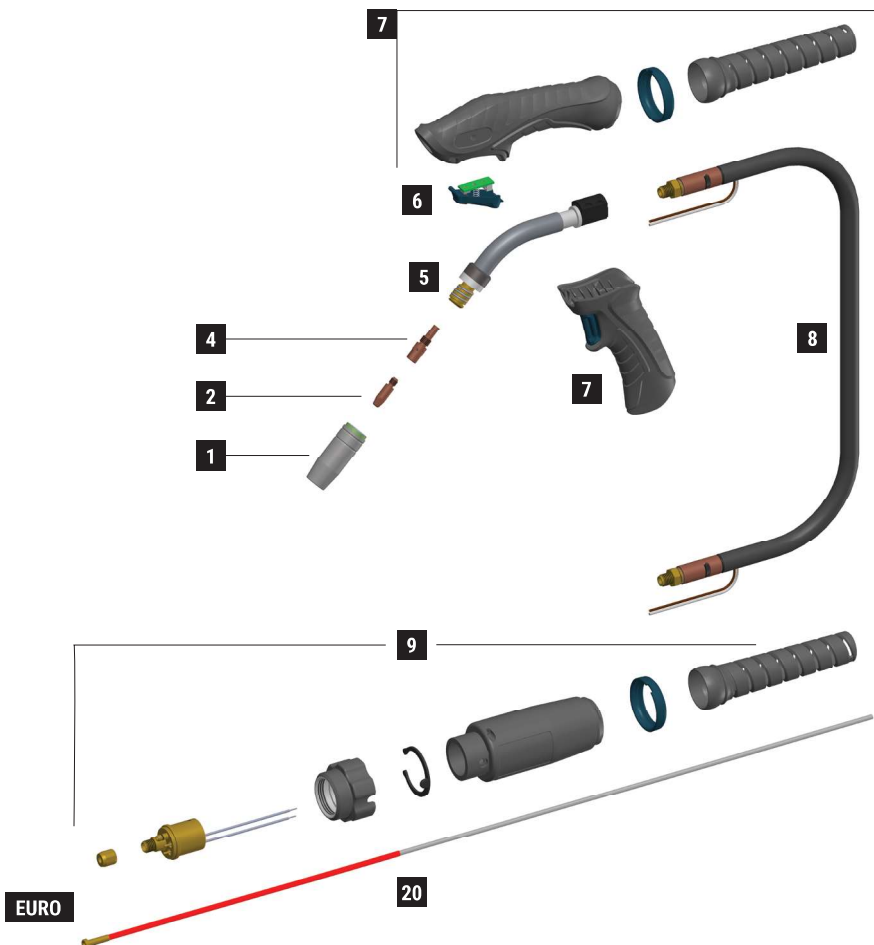
CE EN60974-7



| CODE | ↔ | | | |
|------------|-----|-------|--|---|
| MA4202-030 | 3 m | 10' | | 1 |
| MA4202-040 | 4 m | 12' | | 1 |
| MA4202-050 | 5 m | 16.4' | | 1 |
| EURO | | | | |

| CODE | ↔ | | | |
|------------|-----|-------|--|----|
| MA4202X030 | 3 m | 10' | | 25 |
| MA4202X040 | 4 m | 12' | | 25 |
| MA4202X050 | 5 m | 16.4' | | 25 |
| EURO | | | | |

| TECHNICAL DATA | | |
|--------------------|---------------------|---------------|
| ERGOPLUS 25 | | |
| | 0,9 kg | 1.98 lb |
| | 113 | |
| V PEAK | 113 | |
| | 0,8 ÷ 1,2 mm | .030" ÷ .045" |
| X 60% | 230A CO2 - 220A Mix | |



| | CODE | | | Ø | | | | REF | |
|----|-----------|--|-----------------|--------------|---------------|---------|----------|----------|----|
| 1 | MC0022 | | nozzle | 11,5 mm | 7/16" | 57 mm | 2"-1/4 | 145.0124 | 10 |
| 1 | MC0023 | | nozzle | 15 mm | 19/32" | 57 mm | 2"-1/4 | 145.0076 | 10 |
| 1 | MC0024 | | nozzle | 18 mm | 23/32" | 57 mm | 2"-1/4 | 145.0042 | 10 |
| 1 | MC0025 | | nozzle | 20 mm | 25/32" | 66,5 mm | 2-5/8" | 145.0169 | 10 |
| 1 | MC0265 | | nozzle | 11 mm | 7/16" | 57 mm | 2"-1/4 | - | 10 |
| 1 | MC0267 | | nozzle | 14 mm | 9/16" | 57 mm | 2"-1/4 | | 10 |
| 2 | MD0009-06 | | M6 - Cu | 0,6 mm | .023" | 28 mm | 1"-3/32 | 140.0005 | 20 |
| 2 | MD0009-08 | | M6 - Cu | 0,8 mm | .030" | 28 mm | 1"-3/32 | 140.0051 | 20 |
| 2 | MD0009-09 | | M6 - Cu | 0,9 mm | .035" | 28 mm | 1"-3/32 | 140.0169 | 20 |
| 2 | MD0009-10 | | M6 - Cu | 1,0 mm | .040" | 28 mm | 1"-3/32 | 140.0242 | 20 |
| 2 | MD0009-12 | | M6 - Cu | 1,2 mm | .045" | 28 mm | 1"-3/32 | 140.0379 | 20 |
| 2 | MD0009-14 | | M6 - Cu | 1,4 mm | .052" | 28 mm | 1"-3/32 | - | 20 |
| 2 | MD0009-16 | | M6 - Cu | 1,6 mm | 1/16" | 28 mm | 1"-3/32 | 140.0555 | 20 |
| 4 | ME0016 | | M6 - copper | | | 35 mm | 1"-3/8 | 142.0001 | 10 |
| 4 | ME0040 | | M8 - copper | | | 35 mm | 1"-3/8 | - | 10 |
| 4 | ME0060 | | M6 - copper | | | 37 mm | 1"-15/32 | - | 10 |
| 4 | ME0216 | | M6 - brass | | | 35 mm | 1"-3/8 | - | 10 |
| 20 | GM0510 | | red steel liner | 1,0 ÷ 1,2 mm | .040" ÷ .045" | 3 m | 10' | 124.0026 | 1 |
| 20 | GM0511 | | red steel liner | 1,0 ÷ 1,2 mm | .040" ÷ .045" | 4 m | 12' | 124.0031 | 1 |
| 20 | GM0512 | | red steel liner | 1,0 ÷ 1,2 mm | .040" ÷ .045" | 5 m | 16.4' | 124.0035 | 1 |

| | CODE | | | |
|---|------------|--|---------------------------|----|
| 5 | BW0562 | | plastic body | 10 |
| 5 | EA0304 | | spring | 10 |
| 5 | MF1517 | | Ergoplus 25 torch head | 1 |
| 6 | MT0563 | | trigger kit | 1 |
| 7 | MT0562 | | handle kit | 1 |
| 7 | MT0566 | | pistol grip | 1 |
| 8 | MH0817-030 | | coaxial cable - 3 m / 10' | 1 |
| 8 | MH0817-040 | | coaxial cable - 4 m / 12' | 1 |

| | CODE | | | |
|---|------------|--|-----------------------------|----|
| 8 | MH0817-050 | | coaxial cable - 5 m / 16.4' | 1 |
| 9 | AR0070 | | EURO connector - air | 1 |
| 9 | BW0020 | | metal EURO nut | 10 |
| 9 | FA0026 | | liner nut M10x1 | 10 |
| 9 | MT0565 | | Back box kit EURO | 1 |

STANDARD