

DIAL INDICATORS (LONG STROKE)

**INSPECTION
CERTIFICATE**
TRACEABLE TO NIST

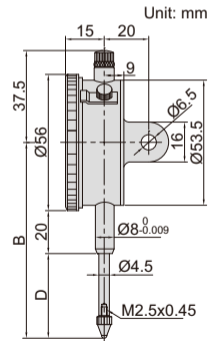


2310-30A

- Supplied with limit pointers and bezel clamp
- Optional accessory: backs (page 176~177), contact points (page 173~175)

| Code | Range | Graduation | Accuracy | Hysteresis | Range/rev | Dial reading | Remark | B | D |
|------------|-------|------------|------------|------------|-----------|--------------|-----------|----|----|
| 2310-20FA* | 20mm | 0.01mm | 25 μ m | 5 μ m | 1mm | 0-100 | flat back | 83 | 35 |
| 2310-30FA* | 30mm | 0.01mm | 35 μ m | 7 μ m | 1mm | 0-100 | flat back | 88 | 40 |
| 2310-20A* | 20mm | 0.01mm | 25 μ m | 5 μ m | 1mm | 0-100 | lug back | 83 | 35 |
| 2310-30A* | 30mm | 0.01mm | 35 μ m | 7 μ m | 1mm | 0-100 | lug back | 88 | 40 |

(mm)



* Supplied with manufacturer inspection certificate traceable to NIST USA